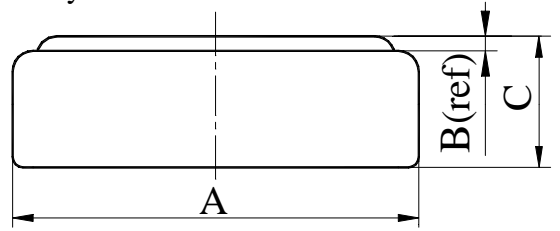


- Chemical System** : Coin Type Manganese Dioxide Lithium battery
- Model No.** : CR927
- Nominal Dimensions** : $\Phi 9.50 \times 2.70\text{mm}$
- Nominal Voltage** : 3.00V
- Average Weight** : 0.50g
- Applications** : Watch, calculator, electronic toy, etc.
- Shelf Life** : Not less than 95% of the service capacity, following 1st year storage at 20°C.
- Standard Capacity** : 30mAh (continuous discharge at 20°C under 0.10mA discharge current to 2.0V voltage)



Dimensions	Unit: mm
A	9.30----9.50
B	0.20(ref)
C	2.50----2.70

