

**Chemical System** : Coin Type Manganese Dioxide Lithium battery

**Model No.** : CR2450

**Nominal Dimensions** :  $\Phi 24.50 \times 5.0\text{mm}$

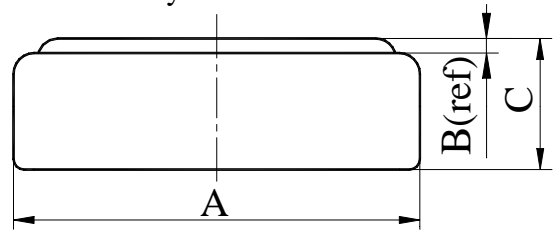
**Nominal Voltage** : 3.00V

**Average Weight** : 6.20g

**Applications** : Watch, calculator, electronic toy, etc.

**Shelf Life** : Not less than 95% of the service capacity, following 1st year storage at 20°C.

**Standard Capacity** : 550mAh(continuous discharge at 20°C under 0.20mA discharge current to 2.0V voltage)



Dimensions	Unit: mm
A	24.20----24.50
B	0.80(ref)
C	4.80----5.00

**Typical Discharge Time at 20°C (Hours)**

