

**Technical Specification**

Chemical System : Coin Type Manganese Dioxide Lithium battery

Model No. : CR2032

Nominal Dimensions :  $\Phi 20.00 \times 3.20\text{mm}$

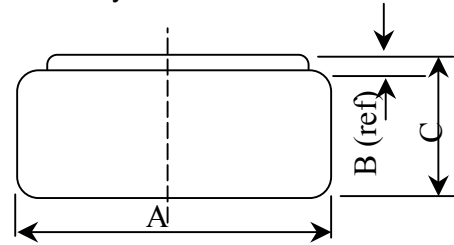
Nominal Voltage : 3.00V

Average Weight : 3.10g

Applications : Watch, calculator, electronic toy, etc.

Shelf Life : Not less than 95% of the service capacity, following 1st year storage at 20°C

Standard Capacity : 240mAh (continuous discharge at 20°C under discharge current to 2.0V voltage)



Dimensions	Unit: mm
A	19.70 - 20.00
B	0.60 (ref)
C	3.00 - 3.20

**Typical Discharge Characteristics at 20°C**

