

**Chemical System** : Coin Type Manganese Dioxide Lithium battery

**Model No.** : CR2025

**Nominal Dimensions** :  $\Phi 20.00 \times 2.50\text{mm}$

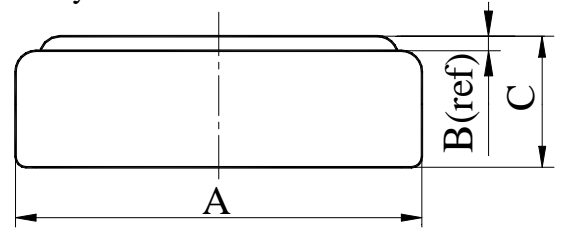
**Nominal Voltage** : 3.00V

**Average Weight** : 2.50g

**Applications** : Watch, calculator, electronic toy, etc.

**Shelf Life** : Not less than 95% of the service capacity, following 1st year storage at 20°C.

**Standard Capacity** : 150mAh(continuous discharge at 20°C under 0.10m A discharge current to 2.0V voltage)



Dimensions	Unit: mm
A	19.70----20.00
B	0.25(ref)
C	2.20----2.50

**Discharge Characteristics (20°C)**

