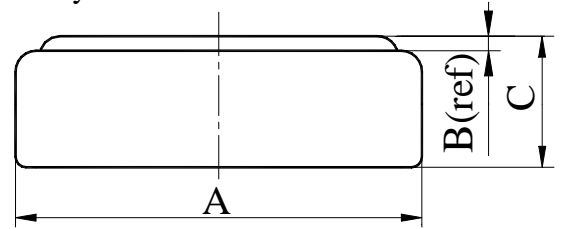
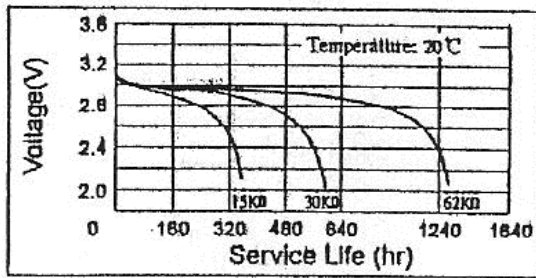


**Chemical System** : Coin Type Manganese Dioxide Lithium battery  
**Model No.** : CR1225  
**Nominal Dimensions** :  $\Phi 12.5 \times 2.50\text{mm}$   
**Nominal Voltage** : 3.00V  
**Average Weight** : 1g  
**Applications** : Watch, calculator, electronic toy, etc.  
**Shelf Life** : Not less than 95% of the service capacity, following 1st year storage at 20°C.  
**Standard Capacity** : 48mAh(continuous discharge at 20°C under 0.10mA discharge current to 2.0V voltage)

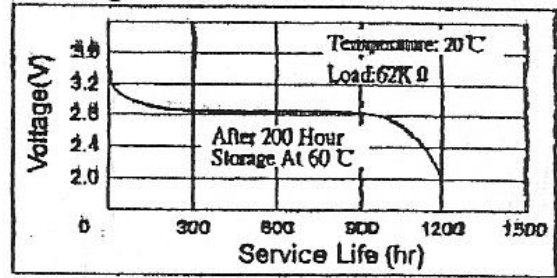


Dimensions	Unit: mm
A	12.0----12.5
B	0.25(ref)
C	2.40----2.50

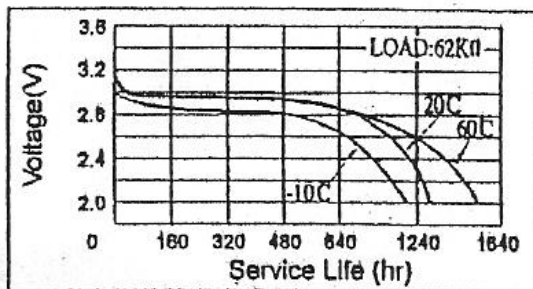
**Discharge Characteristics**



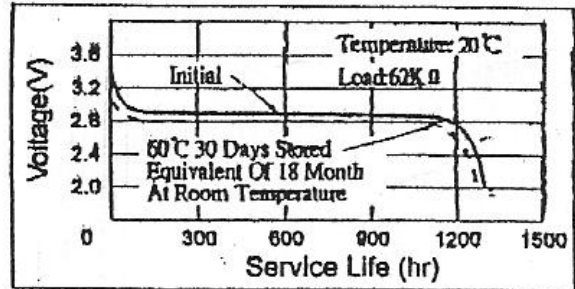
**Long-Term High Temperature Storage Characteristics**



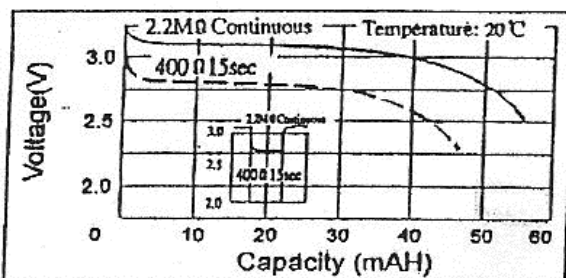
**Temperature Characteristics**



**Storage Characteristics**



**Pulse Discharge Characteristics**



**Load - Capacity**

