

TECHNICAL SPECIFICATION

Model: AG2

Chemical System: Alkaline button cell

Model No. : LR726 (LR59 AG2 196)

Nominal Dimensions : $\varphi 7.90 \times 2.60$ mm

Nominal Voltage : 1.50V

Average Weight : 0.45g

Applications : Watch, calculator, electronic toy, etc.

Shelf Life : Not less than 90% of the service capacity,

Following 1st year storage at 20°C.

Discharge Resistance : 4700 Ω (20°C)

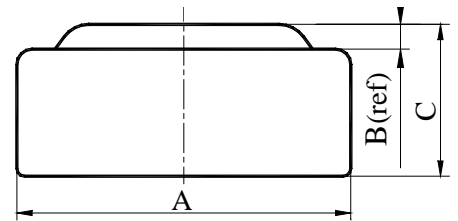
Cut-off Voltage : 0.90V

Nominal Capacity : 25mAh

Cause for use : 1. There are risks of electrolyte leakage or causing damage to the device if the battery is charged;

2. The battery shall be installed with “+” and “-” in correct position;

3. Short-circuiting and heating the battery, disposing of the can must not be permitted



Dimensions	Unit: mm
A	5.70----5.80
B	0.15(ref)
C	1.95----2.15

Typical Discharge Characteristics (20°C)

