

# TECHNICAL SPECIFICATION

**Model: AG1**

Chemical System: Alkaline button cell

Model No. : LR621 (LR60 AG1 164)

Nominal Dimensions :  $\varphi$  6.80x2.15mm

Nominal Voltage: 1.50V

Average Weight: 0.30g

Applications : Watch, calculator, electronic toy, etc.

Shelf Life : Not less than 90% of the service capacity,

Following 1<sup>st</sup> year storage at 20°C.

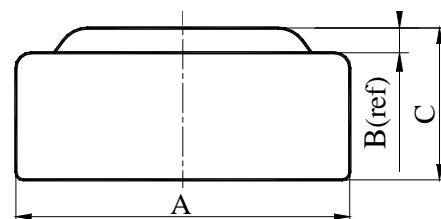
Discharge Resistance : 6800 $\Omega$  (20°C)

Cut-off Voltage : 0.90V

Cause for use : 1. There are risks of electrolyte leakage or causing damage to the device if the battery is charged;

2. The battery shall be installed with “+” and “-” in correct position;

3. Short-circuiting and heating the battery, disposing of the can must not be permitted.



Dimensions	Unit: mm
A	5.70----5.80
B	0.15(ref)
C	1.95----2.15

## Typical Discharge Characteristics (20°C)

